

FERNANDO SOR

VARIATIONS

Over a theme from the Magic Flute by Mozart

Op. 9

FOR GUITAR

Revised and fingered

by

Eythor Thorlaksson

The Guitar School - Iceland

www.classical-guitar-school.com

VARIATIONS

(Over a theme from the Magic Flute by Mozart)

THEME

Rev. Eythor Thorlaksson

Fernando Sor

Andante moderato

VARIATION I

The musical score for Variation I consists of six systems of guitar notation. Each system contains a treble clef staff and a bass clef staff. The key signature is three sharps (F#, C#, G#) and the time signature is 2/4. The notation includes various rhythmic values such as eighth and sixteenth notes, often beamed together. Fingerings are indicated by numbers 1, 2, 3, and 4 above or below notes. Dynamics like accents and slurs are used throughout. The piece concludes with a double bar line and repeat dots. The bass staff often features chords and rests, with some notes marked with an 'x' to indicate muted strings.

VARIATION II

This musical score, titled "VARIATION II", is written for guitar in the key of D major (one sharp) and 2/4 time. It consists of seven staves of music. The notation includes various rhythmic patterns and techniques:

- Staff 1:** Features a triplet of eighth notes (3, 2) and a sixteenth-note triplet (3, 1, 1).
- Staff 2:** Includes a triplet of eighth notes (1, 4, 3) and a sixteenth-note triplet (1, 2, 1).
- Staff 3:** Contains a sixteenth-note triplet (1, 4, 3, 4, 2, 4) and a sixteenth-note triplet (1, 2, 3).
- Staff 4:** Shows a sixteenth-note triplet (4, 2) and a sixteenth-note triplet (1, 4, 4).
- Staff 5:** Features a sixteenth-note triplet (1, 1, 3) and a sixteenth-note triplet (0, 3, 3).
- Staff 6:** Includes a sixteenth-note triplet (4, 1, 3) and a sixteenth-note triplet (3, 1, 2).
- Staff 7:** Contains a sixteenth-note triplet (4, 1, 3) and a sixteenth-note triplet (1, 2, 2).

The score concludes with a double bar line and repeat dots. Circled numbers 4, 3, 4, and 5 are placed below the staves, likely indicating specific measures or techniques.

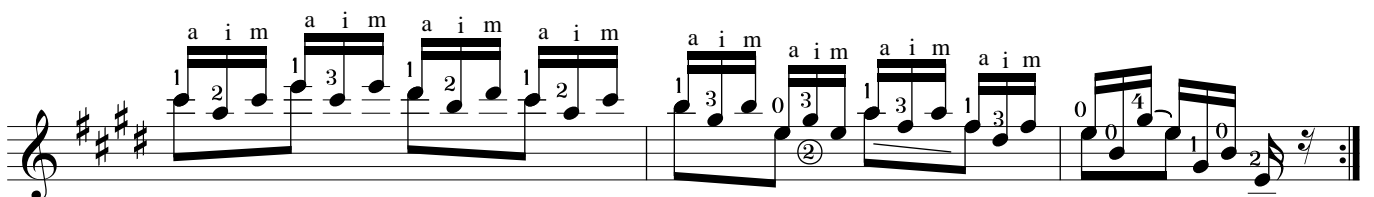
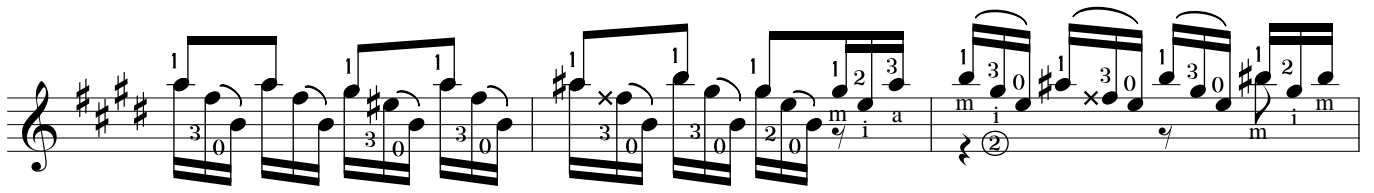
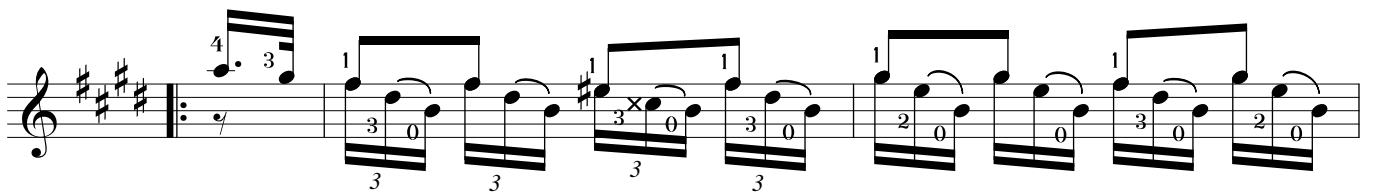
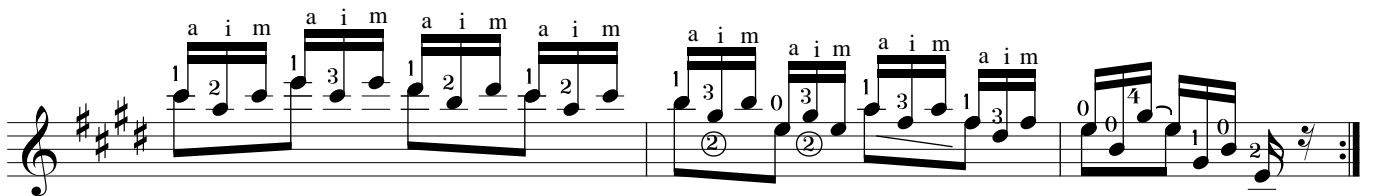
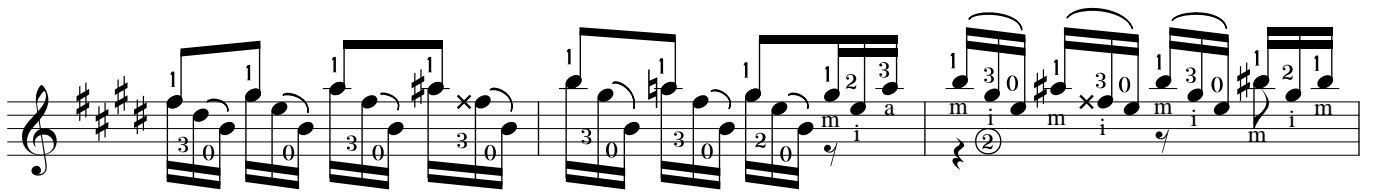
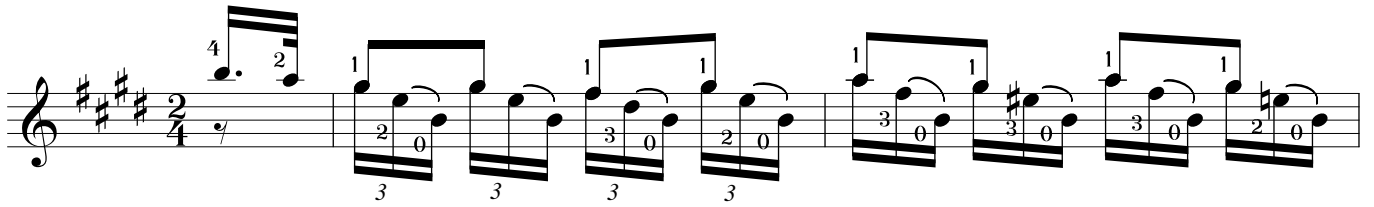
VARIATION III

Musical score for Variation III, consisting of seven staves of music. The key signature is three sharps (F#, C#, G#) and the time signature is 2/4. The score includes various musical notations such as notes, rests, accidentals, and fingering numbers (0-4). It also features circled numbers 1 through 5, likely indicating measure numbers or specific techniques. The final staff includes section markers VIII, IX, and VII.

VARIATION IV

The musical score for Variation IV consists of six staves of guitar notation. The key signature is three sharps (F#, C#, G#) and the time signature is 2/4. The notation includes various techniques such as triplets, quintuplets, and specific fingerings (1-4) for the right hand. The left hand uses natural harmonics (0) and fretted notes. Dynamics include piano (p) and accents (^). The score is organized into measures with repeat signs and fermatas. The first staff contains measures 1-4, the second 5-8, the third 9-12, the fourth 13-16, the fifth 17-20, and the sixth 21-24. The final measure of the sixth staff ends with a double bar line and repeat dots.

VARIATION V



CODA

The musical score for the CODA section consists of eight staves of music. The key signature is three sharps (F#, C#, G#) and the time signature is 2/4. The notation includes various guitar-specific elements:

- Staff 1:** Features a melodic line with a 6-fingered octave run (4-3-1-3-0) and a bass line with triplets and fingering (3, 4, 3, 3, 4, 3, 3).
- Staff 2:** Continues the melodic and bass lines with similar rhythmic patterns.
- Staff 3:** Includes a section marked with a dashed line and Roman numerals V and II. The bass line features a triplet of 4-fingered notes.
- Staff 4:** Further development of the melodic and bass lines.
- Staff 5:** Contains a section marked with a dashed line and Roman numerals VII, IV, V, and II. The bass line includes a triplet of notes with the annotation "3 (obs. harm. 12)".
- Staff 6:** Features a melodic line with a triplet of notes and a bass line with a triplet of notes, including dynamic markings like *p* and *m*.
- Staff 7:** Concludes the section with a final melodic phrase and a bass line with a triplet of notes.